



100% Australian
Owned Company

WASTE & FACILITIES EQUIPMENT

BALERS: MULTIPLE WASTE STREAMS

p: 02 6622 7111
f: 02 6622 7131

www.wrightway.com.au

PRODUCT FEATURES

- Compact design: ideal for locations where space is at a premium.
- Full stroke ram: cardboard, plastic bottles, aluminium cans, shrink wrap & paper.
- Safe, simple, efficient & cost saving multiple waste stream solution
- Bale full indicator: bale is tied with the door closed for complete safety
- Extremely quiet machine when in operation (72 decibels)
- Auto Shut off at full pressure after bale compaction completed
- Optional extra piercing head mechanism for cans and plastic bottles



FREE ACCESSORY
Lifting Trolley

COMPACT 60



COMPACT 75

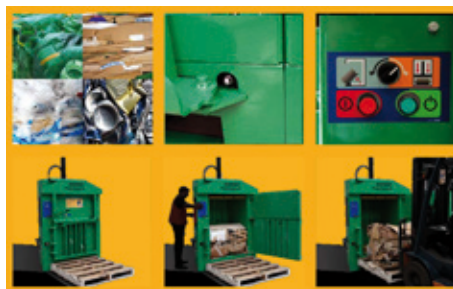
DIMENSIONS:	60KG	75KG
Height	1980mm		2350mm
Width	1040mm		1040mm
Depth	720mm		585mm
Weight	230kg		270kg
Transport Height	1695mm		2350mm
Aperture Width	700mm		640mm
Aperture Depth	500mm		700mm

Power Supply	Single phase 220-240v
Motor	1.5kw / 13 amp
Pressing Force	Up to 3.5 Tonnes

BALES:	60KG	... 75KG
Height	800mm	1000mm
Width	700mm	700mm
Depth	500mm	500mm
Weight	Up to 60kg	Up to 75kg
Cycle Time	24 sec	
Noise Level	72dB	



COMPACT 150



UNIT DIMENSIONS

Height	2800mm
Width	1500mm
Depth	980mm
Weight	780kg
Transport Height	2250mm
Power Supply	Single phase 220-240v
Motor	2 .2kw / 16 amp
Pressing Force	Up to 8 Tonnes
Noise Level	74dB

BALE DIMENSIONS

Height	1000mm
Width	950mm
Depth	800mm
Weight	150kg*
Cycle Time	4 0 sec

LOADING APERTURE DIMENSIONS

Width	650mm
Depth	950mm

- Ideal for multiple waste streams
- Medium pallet size bale: bale weight output up to 150kg
- Retaining claws to reduce spring back
- A mid-range baler with easy loading for larger size boxes
- Auto Shut off at full pressure after bale compaction completed or if door is opened during operation
- Ideal for medium to large amounts of material

email: sales@wrightway.com.au



100% Australian
Owned Company

WASTE & FACILITIES EQUIPMENT

MULTI CHAMBER BALERS

p: 02 6622 7111
f: 02 6622 7131

www.wrightway.com.au

- Save handling time: one or more chamber/s free while others in use
- Perfect for environments with height restrictions
- Roller guided head for ease of movement
- Automated bale eject for easy, safe bale unloading
- Retaining claws prevent spring back
- Safe, simple, efficient & cost saving waste solution
- Ideal for medium to large volumes of material



- 01 Ideal for multiple waste streams
- 02 Auto shut off safety switch if door is opened during operation
- 03 Multi-stage door release for added operator safety
- 04 Roller guided head for ease of movement between chambers with auto shut off when handle lifted
- 05 Auto bale eject – two hand operation for maximum operator safety
- 06 Medium pallet size bales

UNIT DIMENSIONS - TWIN CHAMBER

Height	1980mm
Width	2050mm
Depth	820mm
Weight	562kg
Transport Height	1978mm
Power Supply	Single phase 220-240v
Motor	1.5kw / 13 amp
Pressing Force	Up to 3.5 Tonnes
Noise Level	72dB

LOADING APERTURE DIMENSIONS

Width	1100mm
Depth	800mm

MULTI CHAMBER 75



BALE DIMENSIONS

Height	1000mm
Width	700mm
Depth	500mm
Weight	75kg*
Cycle Time	24 sec

MULTI CHAMBER 200



UNIT DIMENSIONS - TWIN CHAMBER

Height	2470mm
Width	3060mm
Depth	1100mm
Weight	1400kg
Transport Height	2471mm
Power Supply	Single phase 220-240v
Motor	2.2kw / 16 amp
Pressing Force	Up to 15 Tonnes
Noise Level	72dB

BALE DIMENSIONS

Height	800mm
Width	1100mm
Depth	800mm
Weight	200kg*
Cycle Time	34 sec

LOADING APERTURE DIMENSIONS

Width	1100mm
Depth	800mm

email: sales@wrightway.com.au